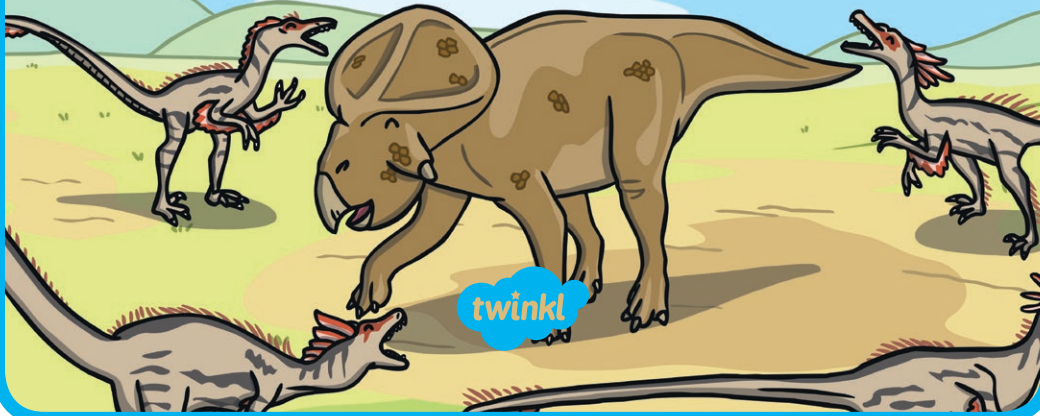


Dinosaur

Fact Cards

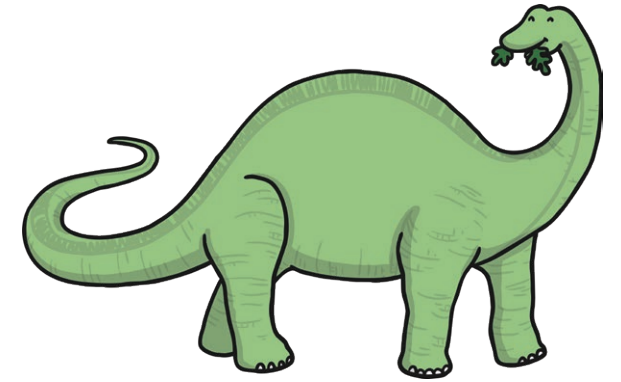


Dinosaur Fact Cards

Apatosaurus

Length: 21m
Height: 5m
Weight: 16,000kg
Diet: plants
Fascinating Fact:

Apatosaurus' had long whip-like tails that helped to balance their long necks.

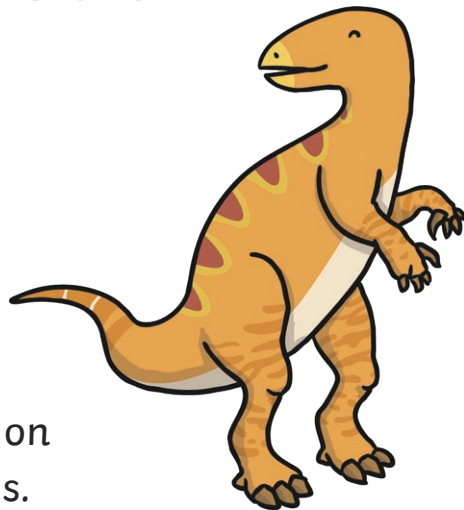


Dinosaur Fact Cards

Iguanodon

Length: 10m
Height: 3m
Weight: 4,000kg
Diet: plants
Fascinating Fact:

This dinosaur could walk on two legs or on all four legs.

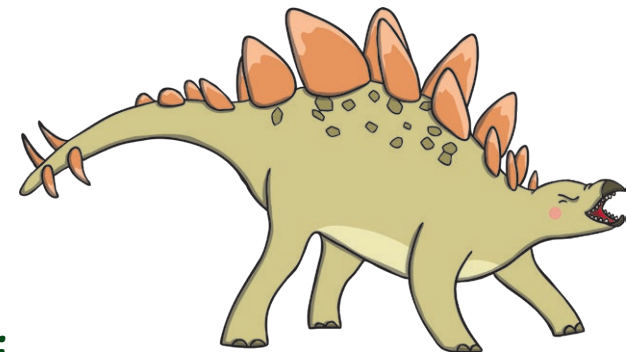


Dinosaur Fact Cards

Stegosaurus

Length: 9m
Height: 3m
Weight: 3,000kg
Diet: plants
Fascinating Fact:

Although the Stegosaurus body was large, the size of their brain was only around the size of a dog's.



Oviraptor

Length: 2m

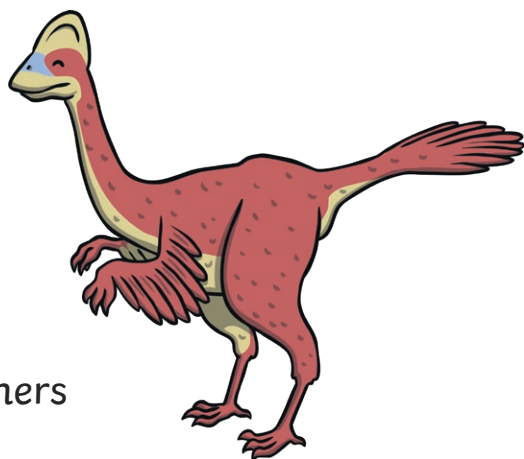
Height: 1.5m

Weight: 20kg

Diet: meat, eggs, seeds, insects and plants

Fascinating Fact:

This dinosaur had feathers and a powerful jaw.



Tyrannosaurus rex

Length: 12m

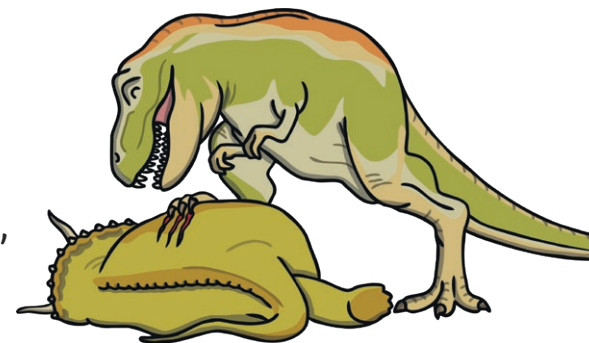
Height: 6m

Weight: 7,000kg

Diet: other dinosaurs, such as Triceratops

Fascinating Fact:

This fearsome dinosaur could crush the bones of other dinosaurs.



Brachiosaurus

Length: 26m

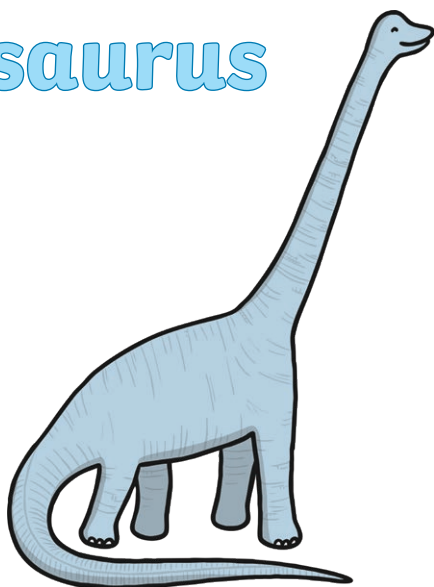
Height: 16m

Weight: 80,000kg

Diet: plants

Fascinating Fact:

This dinosaur is the largest and heaviest land animal ever discovered.



Velociraptor

Length: 2m

Height: 0.5m

Weight: 15kg

Diet: leftover carcasses killed by larger dinosaurs

Fascinating Fact:

Velociraptor's bodies were about the same size as a Christmas turkey.



Triceratops

Length: 9m

Height: 3m

Weight: 12,000kg

Diet: plants

Fascinating Fact:

Triceratops had three nose horns they used for defence.

